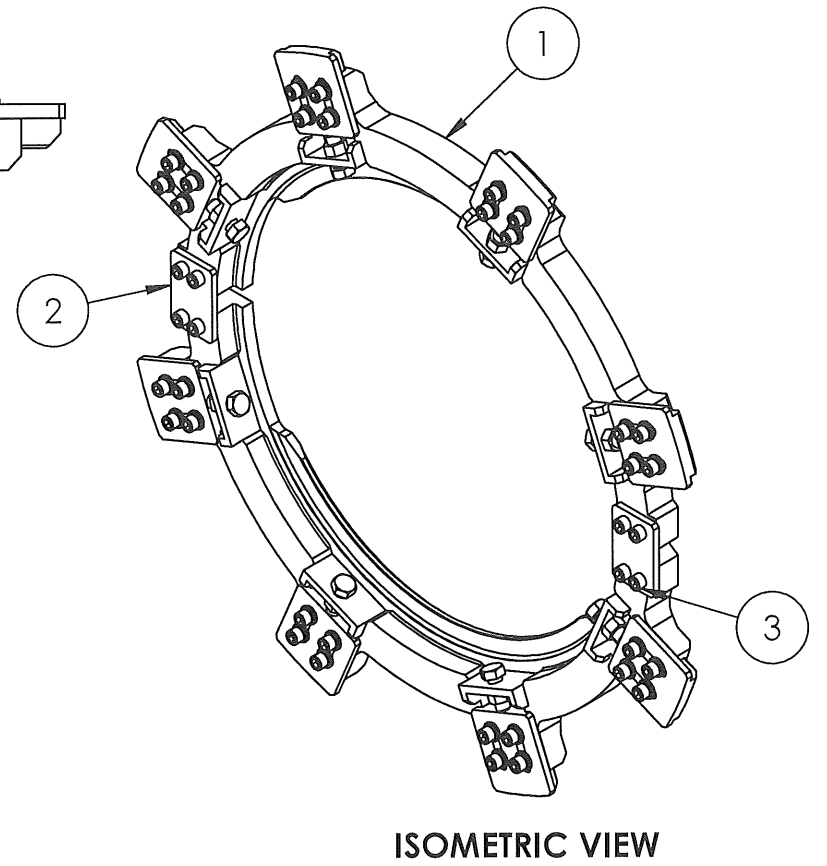
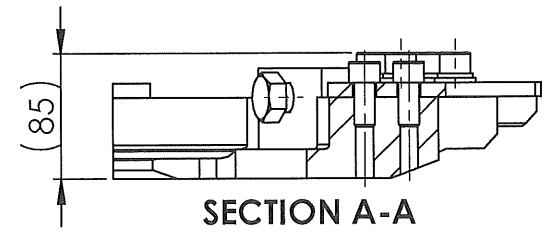
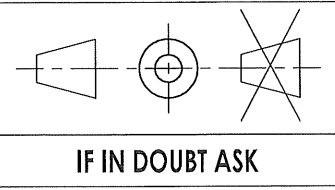


DRAWING COPYRIGHT STATEMENT

Copyright subsists in this drawing and vests in Eskom Rotek Industries SOC Ltd. The drawing and its notations, unless otherwise indicated, also constitute confidential information which is the property of Eskom Rotek Industries SOC Ltd. Eskom Rotek Industries SOC Ltd relies, for the protection of its interests, on the statutory and common law rights as aforesaid and any unauthorised copying or use of this drawing or its contents would result in infringement of such rights.



Notes

1. All dimensions are in mm
2. Dimensions in (...) are for reference only.

Finish: Clean

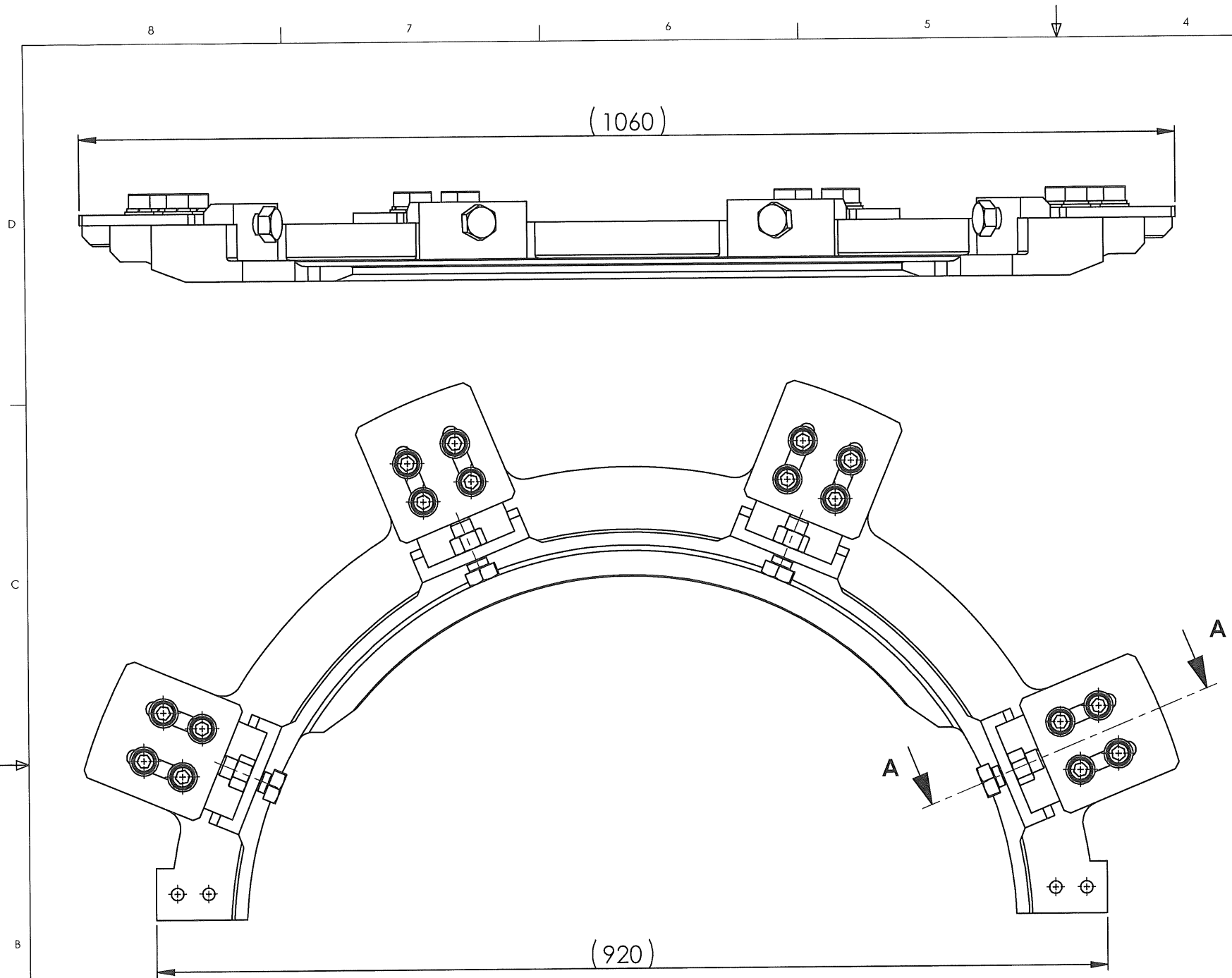
Mass: 127.8 kg



Remier Smith
elt 02-11-2020

ITEM NO.	DESCRIPTION	DRAWING NUMBER	REV	QTY.
1	HP Rear Bracket Sub Assembly	13.25_8647	0	2
2	Connecting_Plate	13.25_8650	0	2
3	Socket Head Cap Screws M14 x 30 (ISO 4762) (Grade 8.8)	Bought Out Item	-	8

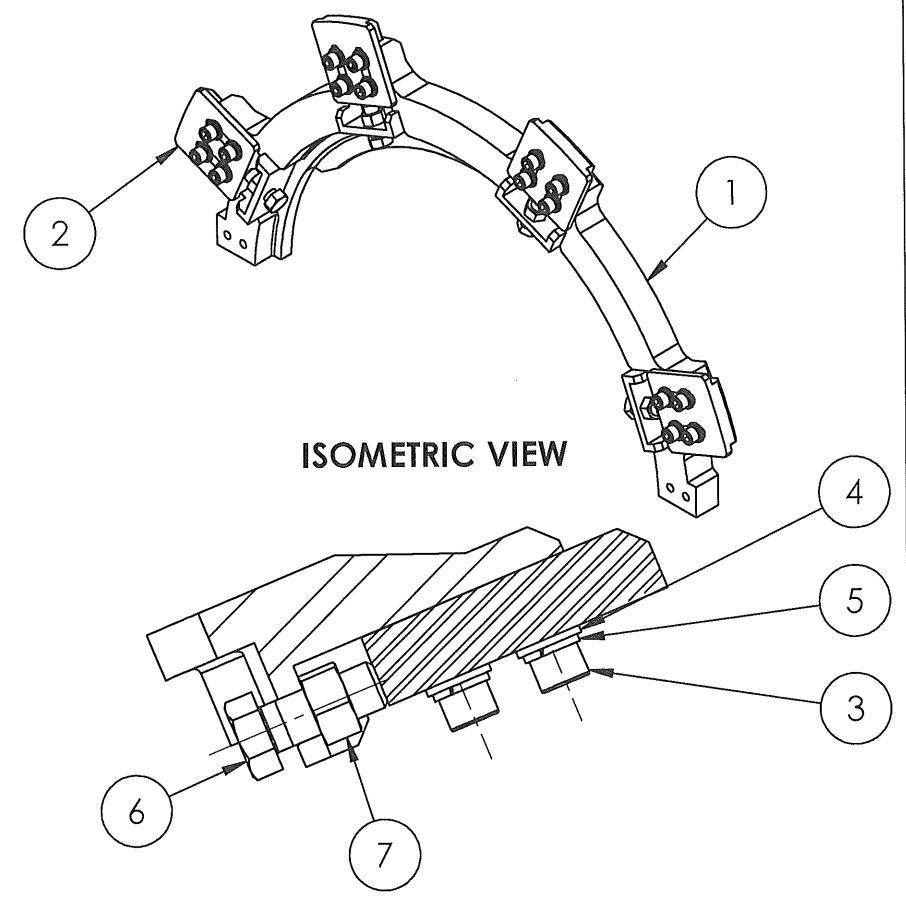
PRJ TEE-L-675	JOB TOD-L-9475	REV	DATE	REVISION DESCRIPTION	REV BY	CHKD BY	AUTH BY	APPR BY	REFERENCE DRAWINGS
DESIGN APPR	2020/09/30	S.A Mcobeni	1. DRAWING FILE PATH- Z:\Engineering Development\Drawing Office\TOD-L-9475 GEC HP Cartridge Transportation Brackets\03_Cad_Data\Models_Drawings\						
DO AUTH	2020/09/30	<i>[Signature]</i>	2. MODEL FILE PATH- Z:\Engineering Development\Drawing Office\TOD-L-9475 GEC HP Cartridge Transportation Brackets\03_Cad_Data\Models_Drawings\						
CHKD BY	30/09/2020	<i>Moshia</i>							
DRAWN BY	2020/07/15	T Mogale							
					TITLE ROSHERVILE UNIT 1 - 6 RMF-GEC HP CARTRIDGE TRANSPORTATION HP REAR BRACKET ASSEMBLY				
					APPROVED BY	DATE	DRAWING No.	SHEET	REV
SCALE					<i>[Signature]</i>	01.10.2020	13.25_8646	1 OF 1	0
DO NOT SCALE									



DRAWING COPYRIGHT STATEMENT

Copyright subsists in this drawing and vests in Eskom Rotek Industries SOC Ltd. The drawing and its notations, unless otherwise indicated, also constitute confidential information which is the property of Eskom Rotek Industries SOC Ltd. Eskom Rotek Industries SOC Ltd relies, for the protection of its interests, on the statutory and common law rights as aforesaid and any unauthorised copying or use of this drawing or its contents would result in infringement of such rights.

IF IN DOUBT ASK



Notes

- 1. All dimensions are in mm
- 2. Dimensions in (...) are for reference only

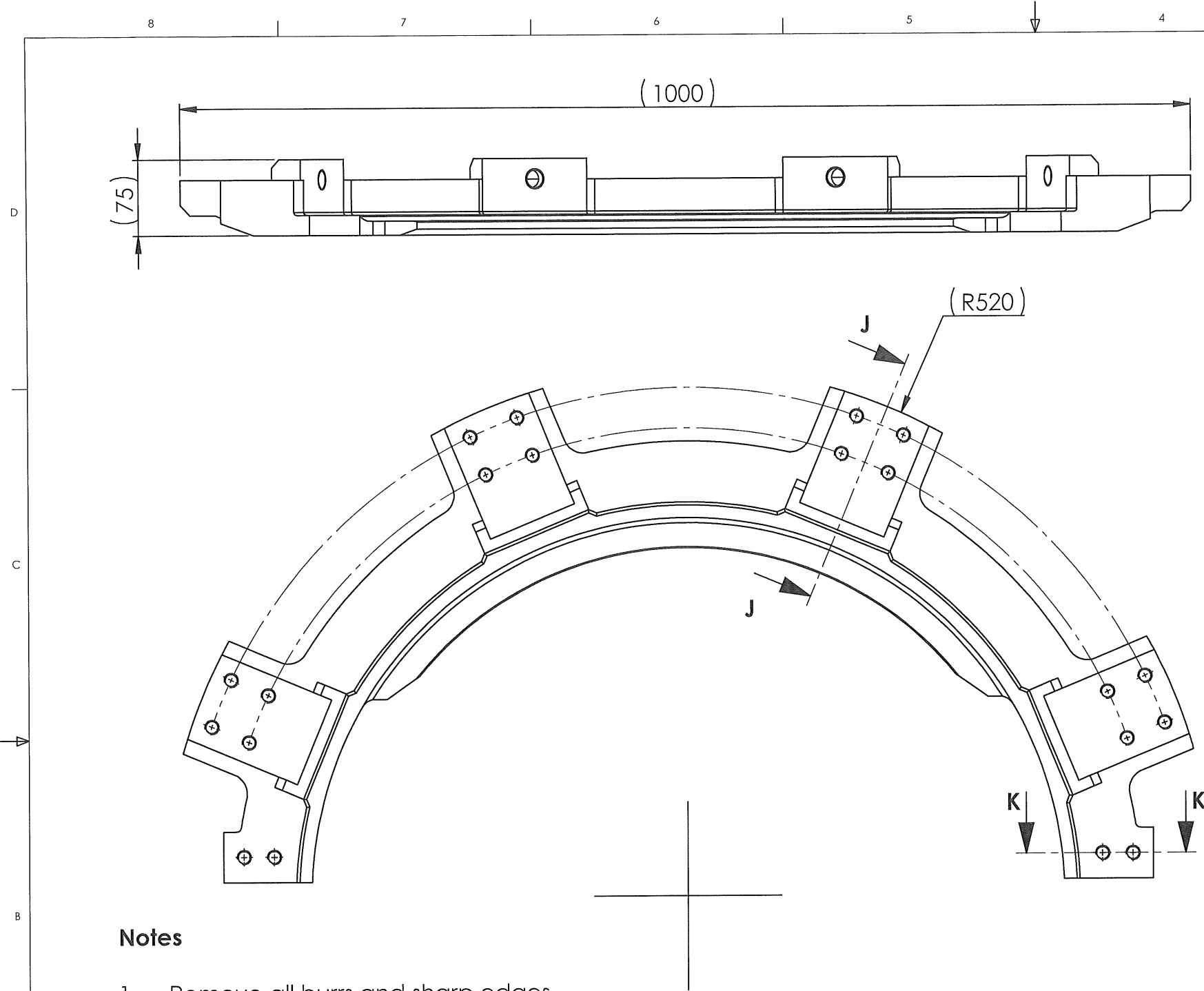
Used on: 13.25_8646

Mass: 62.9 kg

02-11-2020 with klt

ITEM NO.	DESCRIPTION	DRAWING NUMBER	REV	QTY.
1	HP Rear Core Spider Bracket	13.25_8648	0	1
2	Adjustable Leg Rear	13.25_8649	0	4
3	Socket Head Cap Screws M14 x 50 (ISO 4762) (Grade 8.8)	Bought Out Item	-	16
4	Flat Washer M14 (ISO 7089) (Class 8)	Bought Out Item	-	16
5	Spring Washer M14 (DIN 7980) (Class 8)	Bought Out Item	-	16
6	Hexagonal Bolt M20 x (ISO 4014) (Grade 8.8)	Bought Out Item	-	4
7	Hexagon Nut M20 (ISO 4032) (Class 8)	Bought Out Item	-	4

PRJ No.	JOB No.	REV	DATE	REVISION DESCRIPTION	REV BY	CHKD BY	AUTH BY	APPR BY	REFERENCE DRAWINGS
TEE-L-675 TOD-L-9475	DESIGN APPR		2020/07/30	S.A Mcobeni					
	DO AUTH		2020/07/30						
	CHKD BY		2020/07/30	Moshia					
	DRAWN BY		2020/07/15	T Mogale					
1. DRAWING FILE PATH- Y:\Engineering\Development\Drawing Office\TOD-L-9475 GEC HP Cartridge Transportation Brackets\03_Cad_Data\Models_Drawings\ 2. MODEL FILE PATH- Y:\Engineering\Development\Drawing Office\TOD-L-9475 GEC HP Cartridge Transportation Brackets\03_Cad_Data\Models_Drawings\					TITLE ROSHERVILLE UNIT 1 - 6 RMF-GEC HP CARTRIDGE TRANSPORTATION HP REAR BRACKET SUB ASSEMBLY				
					APPROVED BY 	DATE 21.08.2020	DRAWING No. 13.25_8647	SHEET 1 OF 1	REV 0
SCALE DO NOT SCALE									



Notes

1. Remove all burrs and sharp edges
2. Tolerances $\pm 0.2\text{mm}$ U.O.S
3. Angular tolerances $\pm 0.2^\circ$ U.O.S
4. All dimensions are in mm
5. Machined $\nabla 1.6$ U.O.S.
6. Dimensions in (...) are for reference only.

Finish: Clean

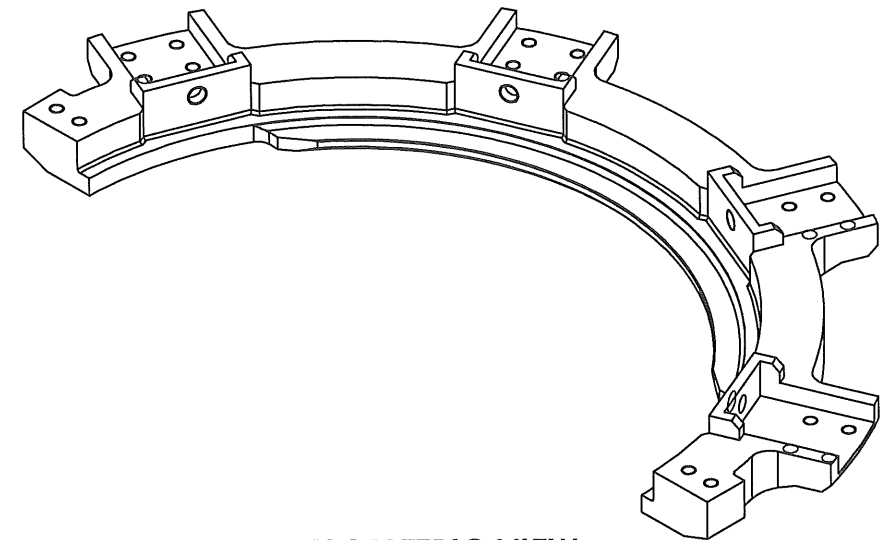
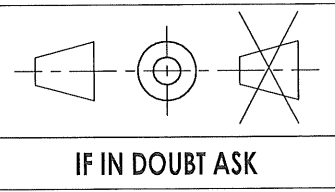
Used on: 13.25_8647

Material: S355JR or equivalent

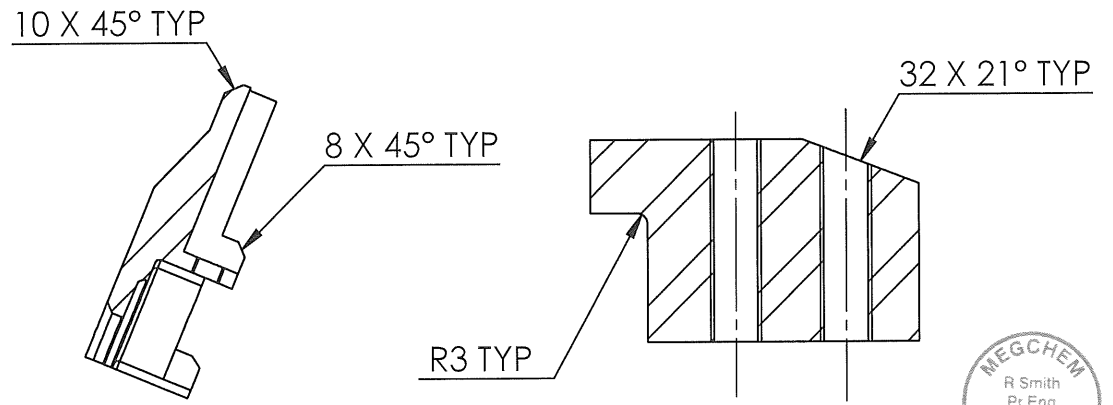
Mass: 52.8 kg

DRAWING COPYRIGHT STATEMENT

Copyright subsists in this drawing and vests in Eskom Rotek Industries SOC Ltd. The drawing and its notations, unless otherwise indicated, also constitute confidential information which is the property of Eskom Rotek Industries SOC Ltd. Eskom Rotek Industries SOC Ltd. relies for the protection of its interests on the statutory and common law rights as aforesaid and any unauthorised copying or use of this drawing or its contents would result in infringement of such rights.



ISOMETRIC VIEW



SECTION J-J

SECTION K-K

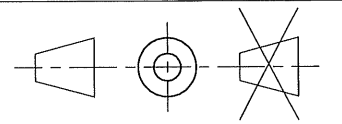


Revised by R. Smith
02-11-2020

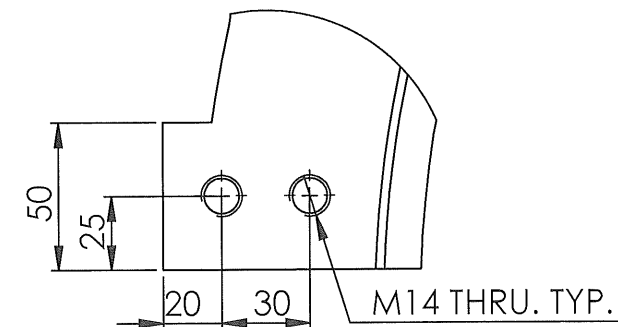
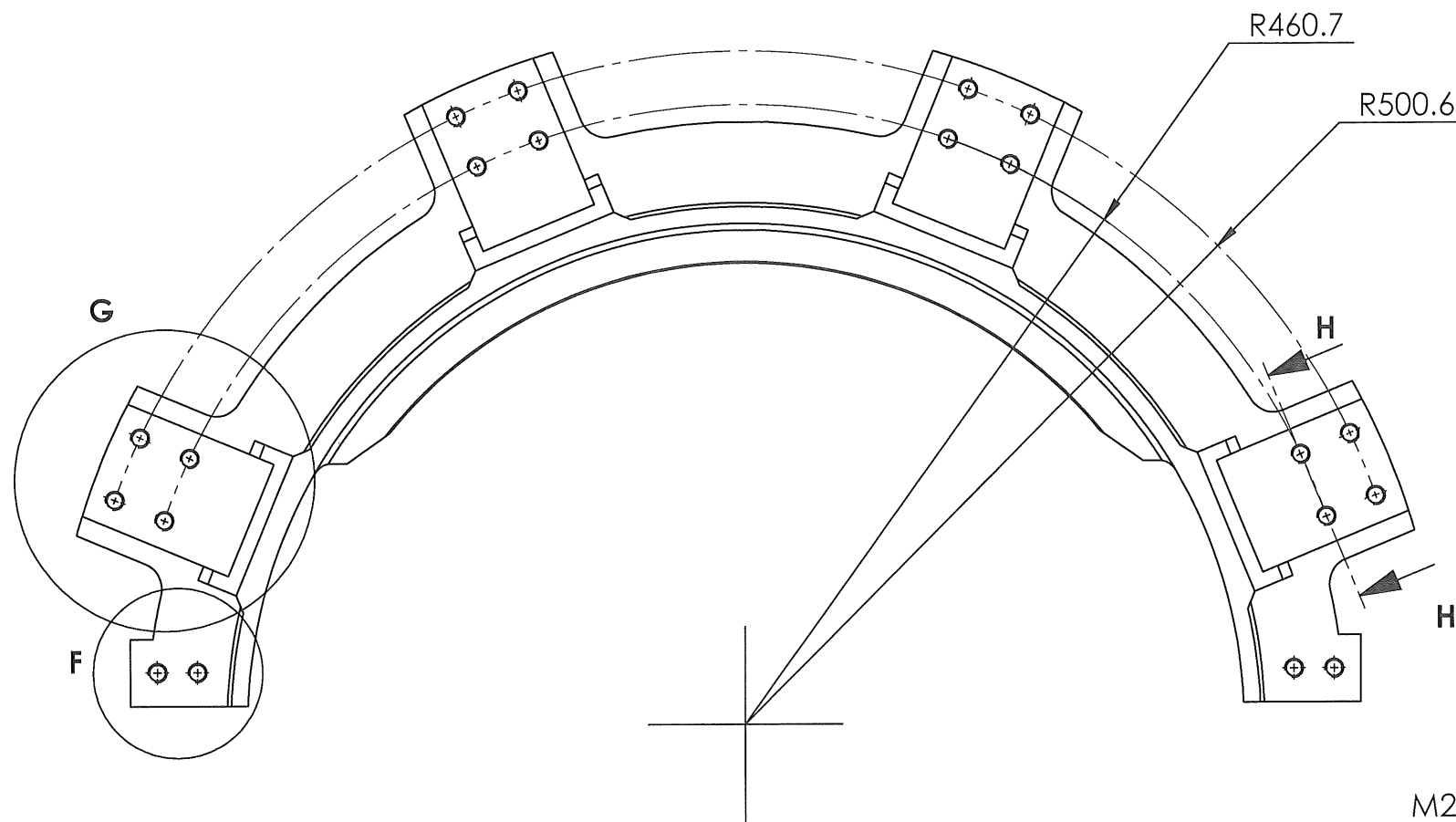
PRJ No.	JOB No.	REV	DATE	REVISION DESCRIPTION	REV BY	CHKD BY	AUTH BY	APPR BY	REFERENCE DRAWINGS
TEE-L-675	TOD-L-9475								
DESIGN APPR	2020/10/28	S.A Mcobeni		1. DRAWING FILE PATH- Z:\Engineering Development\Drawing Office\TOD-L-9475 GEC HP Cartridge Transportation Brackets\03_Cad_Data\Models_Drawings\					
DO AUTH	2020/10/28	<i>##</i>		2. MODEL FILE PATH- Z:\Engineering Development\Drawing Office\TOD-L-9475 GEC HP Cartridge Transportation Brackets\03_Cad_Data\Models_Drawings\					
CHKD BY	2020/10/27	<i>Choshia</i>							
DRAWN BY	2020/07/15	T Mogale							
					ROSHERVILLE UNIT 1 - 6 RMF-GEC HP CARTRIDGE TRANSPORTATION HP REAR CORE SPIDER BRACKET PART				
					APPROVED BY	DATE	DRAWING No.	SHEET	REV
						29.10.2020	13.25_8648	1 OF 7	0
SCALE					DO NOT SCALE				

DRAWING COPYRIGHT STATEMENT

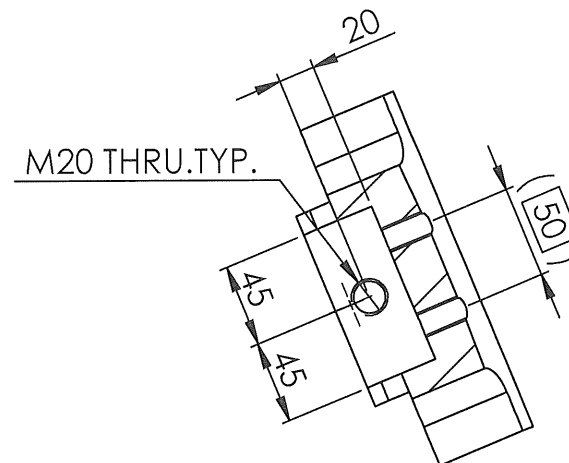
Copyright subsists in this drawing and vests in Eskom Rotek Industries SOC Ltd. The drawing and its notations, unless otherwise indicated, also constitute confidential information which is the property of Eskom Rotek Industries SOC Ltd. Eskom Rotek Industries SOC Ltd. relies, for the protection of its interests, on the statutory and common law rights as aforesaid and any unauthorised copying or use of this drawing or its contents would result in infringement of such rights.



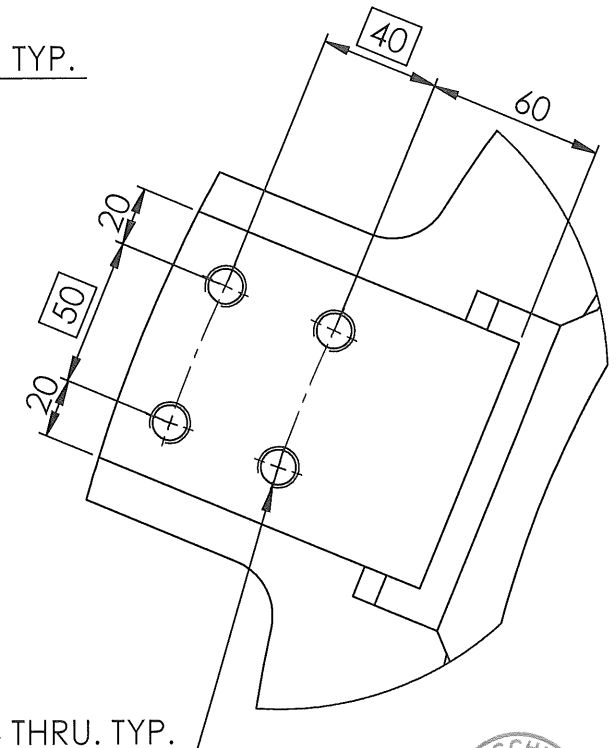
IF IN DOUBT ASK



DETAIL F
TYP BOTH SIDES



SECTION H-H
TYP.



DETAIL G
TYP TO ALL



R. Smith
Pr Eng
202001256
(Pty) Ltd

02 -11- 2020

Notes

1. Remove all burrs and sharp edges
2. Tolerances $\pm 0.2\text{mm}$ U.O.S
3. Angular tolerances $\pm 0.2^\circ$ U.O.S
4. All dimensions are in mm
5. Machined $\nabla_{1.6}$ U.O.S.
6. Dimensions in (...) are for reference only.

Finish: Clean

Used on: 13.25_8747

Material: S355JR or equivalent

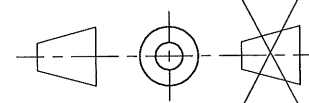
Mass: 52.8 kg

PRJ	TEE-L-675	TOD-L-9475	REV	DATE	REVISION DESCRIPTION	REV BY	CHKD BY	AUTH BY	APPR BY	REFERENCE DRAWINGS
DESIGN APPR	2020/10/28	S.A Mcobeni	1. DRAWING FILE PATH- Z:\Engineering Development\Drawing Office\TOD-L-9475 GEC HP Cartridge Transportation Brackets\03_Cad_Data\Models_Drawings\							
DO AUTH	2020/10/28	##	2. MODEL FILE PATH- Z:\Engineering Development\Drawing Office\TOD-L-9475 GEC HP Cartridge Transportation Brackets\03_Cad_Data\Models_Drawings\							
CHKD BY	2020/10/27	C. Moshia								
DRAWN BY	2020/07/15	T Mogale								
Eskom Rotek Industries						APPROVED BY	DATE	DRAWING No.	SHEET	REV
DO NOT SCALE							29.10.2020	13.25_8648	2 OF 7	0

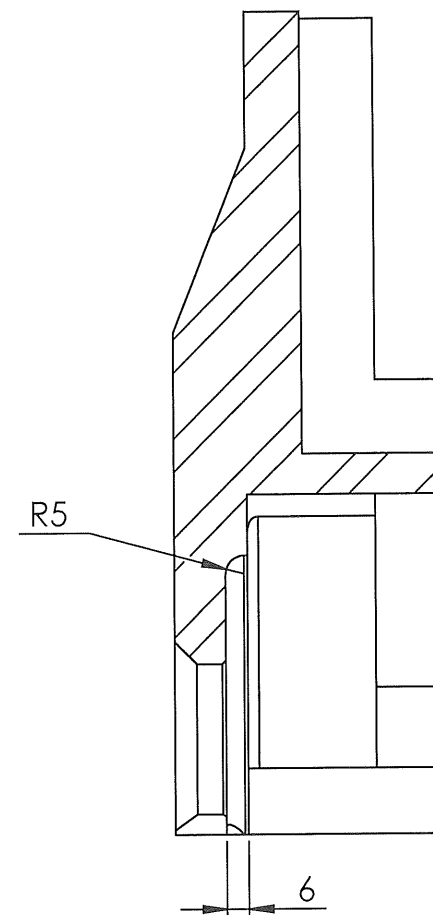
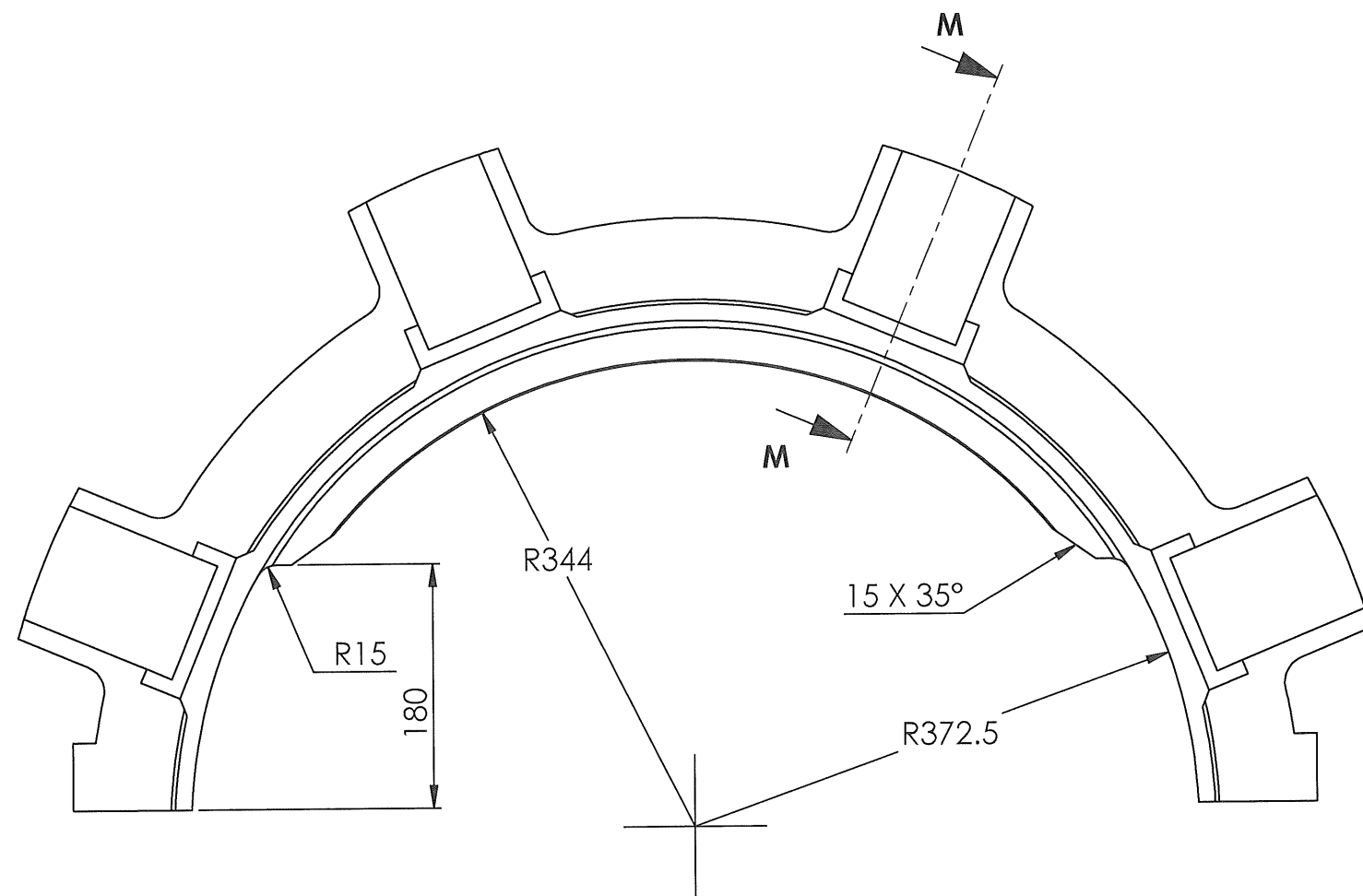
SIZE A3L

DRAWING COPYRIGHT STATEMENT

Copyright subsists in this drawing and vests in Eskom Rotek Industries SOC Ltd. The drawing and its notations, unless otherwise indicated, also constitute confidential information which is the property of Eskom Rotek Industries SOC Ltd. Eskom Rotek Industries SOC Ltd. relies, for the protection of its interests, on the statutory and common law rights as aforesaid and any unauthorised copying or use of this drawing or its contents would result in infringement of such rights.



IF IN DOUBT ASK



SECTION M-M

Notes

1. Remove all burrs and sharp edges
2. Tolerances $\pm 0.2\text{mm}$ U.O.S
3. Angular tolerances $\pm 0.2^\circ$ U.O.S
4. All dimensions are in mm
5. Machined $\nabla 1.6$ U.O.S.
6. Dimensions in (...) are for reference only.

Finish: Clean

Used on: 13.25_8647

Material: S355JR or equivalent

Mass: 52.8 kg



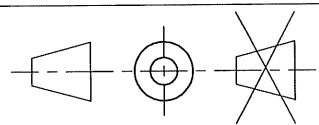
Remier Smith
Rlt
02 -11- 2020

PRJ No.	JOB No.	REV	DATE	REVISION DESCRIPTION	REV BY	CHKD BY	AUTH BY	APPR BY	REFERENCE DRAWINGS
TEEL-675	TOD-L-9475								
DESIGN APPR	2020/10/28	S.A Mcoben		1. DRAWING FILE PATH- Z:\Engineering\Drawing\Development\Drawing\Office\TOD-L-9475 GEC HP Cartridge Transportation Brackets\03_Cad_Data\Models_Drawings\					
DO AUTH	2020/10/28			2. MODEL FILE PATH- Z:\Engineering\Drawing\Development\Drawing\Office\TOD-L-9475 GEC HP Cartridge Transportation Brackets\03_Cad_Data\Models_Drawings\					
CHKD BY	2020/10/27	Moshia							
DRAWN BY	2020/07/15	T Mogale							
					ROSHERVILLE UNIT 1 - 6 RMF-GEC HP CARTRIDGE TRANSPORTATION HP REAR CORE SPIDER BRACKET PART				
					APPROVED BY	DATE	DRAWING No.	SHEET	REV
DO NOT SCALE						29.10.2020	13.25_8648	3 OF 7	0

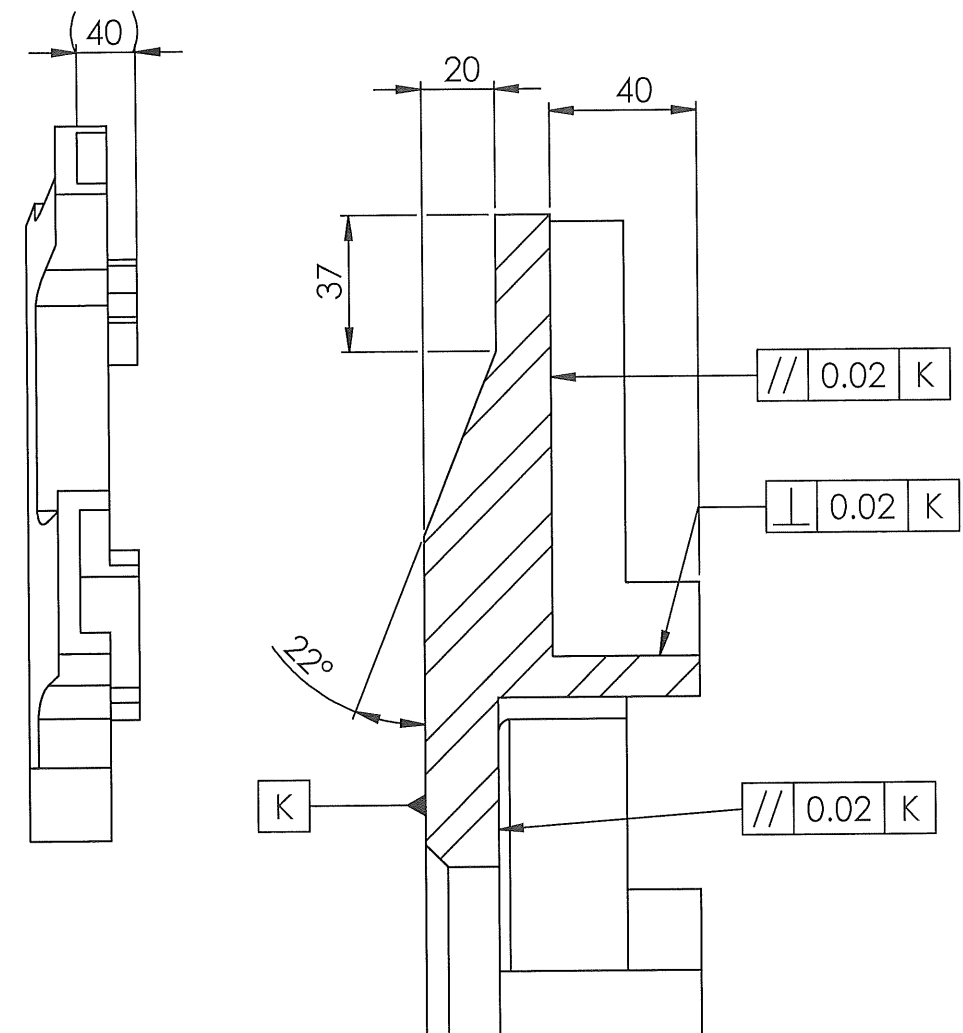
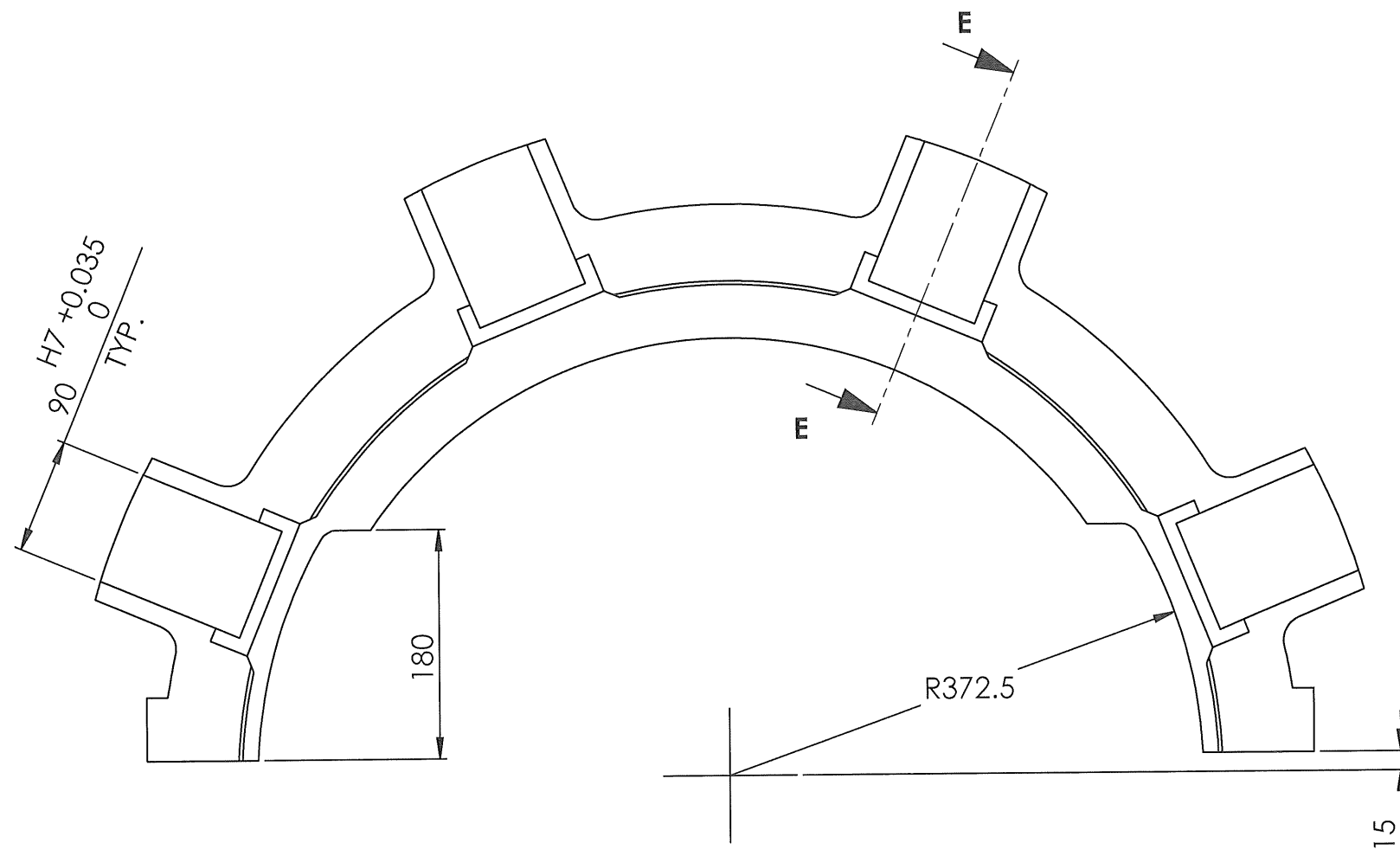
SIZE A3L

DRAWING COPYRIGHT STATEMENT

Copyright subsists in this drawing and vests in Eskom Rotek Industries SOC Ltd. The drawing and its notations, unless otherwise indicated, also constitute confidential information which is the property of Eskom Rotek Industries SOC Ltd. Eskom Rotek Industries SOC Ltd. relies for the protection of its interests, on the statutory and common law rights as aforesaid and any unauthorised copying or use of this drawing or its contents would result in infringement of such rights.



IF IN DOUBT ASK



SECTION E-E



Reinier Smith
Rt 02-11-2020

Notes

1. Remove all burrs and sharp edges
2. Tolerances $\pm 0.2\text{mm}$ U.O.S
3. Angular tolerances $\pm 0.2^\circ$ U.O.S
4. All dimensions are in mm
5. Machined $\nabla_{1.6}$ U.O.S.
6. Dimensions in (...) are for reference only.

Finish: Clean

Used on: 13.25_8647

Material: S355JR or equivalent

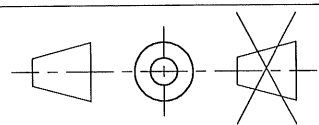
Mass: 52.8 kg

PRJ No.	JOB No.	REV	DATE	REVISION DESCRIPTION	REV BY	CHKD BY	AUTH BY	APPR BY	REFERENCE DRAWINGS
TEE-L-675	TOD-L-9475								
DESIGN APPR	2020/10/28	S.A Mcoben		1. DRAWING FILE PATH- Z:\Engineering Development\Drawing Office\TOD-L-9475 GEC HP Cartridge Transportation Brackets\03_Cad_Data\Models_Drawings\					
DO AUTH	2020/10/28			2. MODEL FILE PATH- Z:\Engineering Development\Drawing Office\TOD-L-9475 GEC HP Cartridge Transportation Brackets\03_Cad_Data\Models_Drawings\					
CHKD BY	2020/10/27	Moshia							
DRAWN BY	2020/07/15	T Mogale							
APPROVED BY					DATE		DRAWING No.		
Eskom Rotek Industries					29.10.2020		13.25_8648		
SCALE					DO NOT SCALE		SHEET		
							4 OF 7		
							REV		
							0		

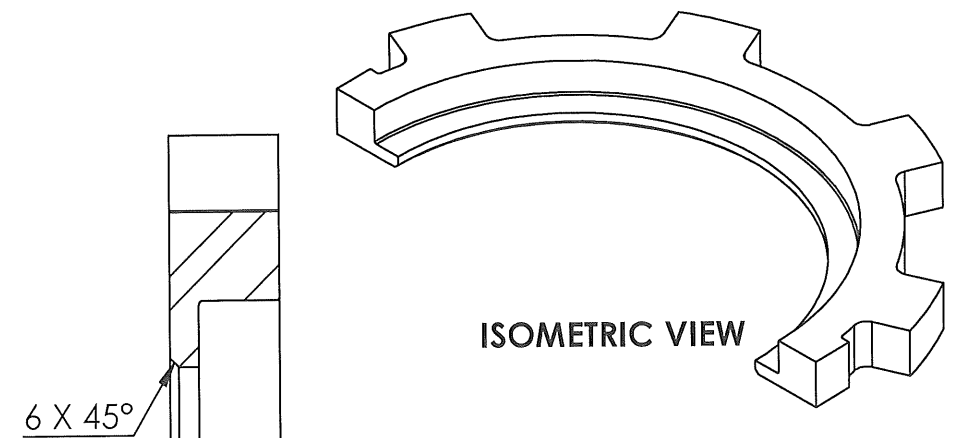
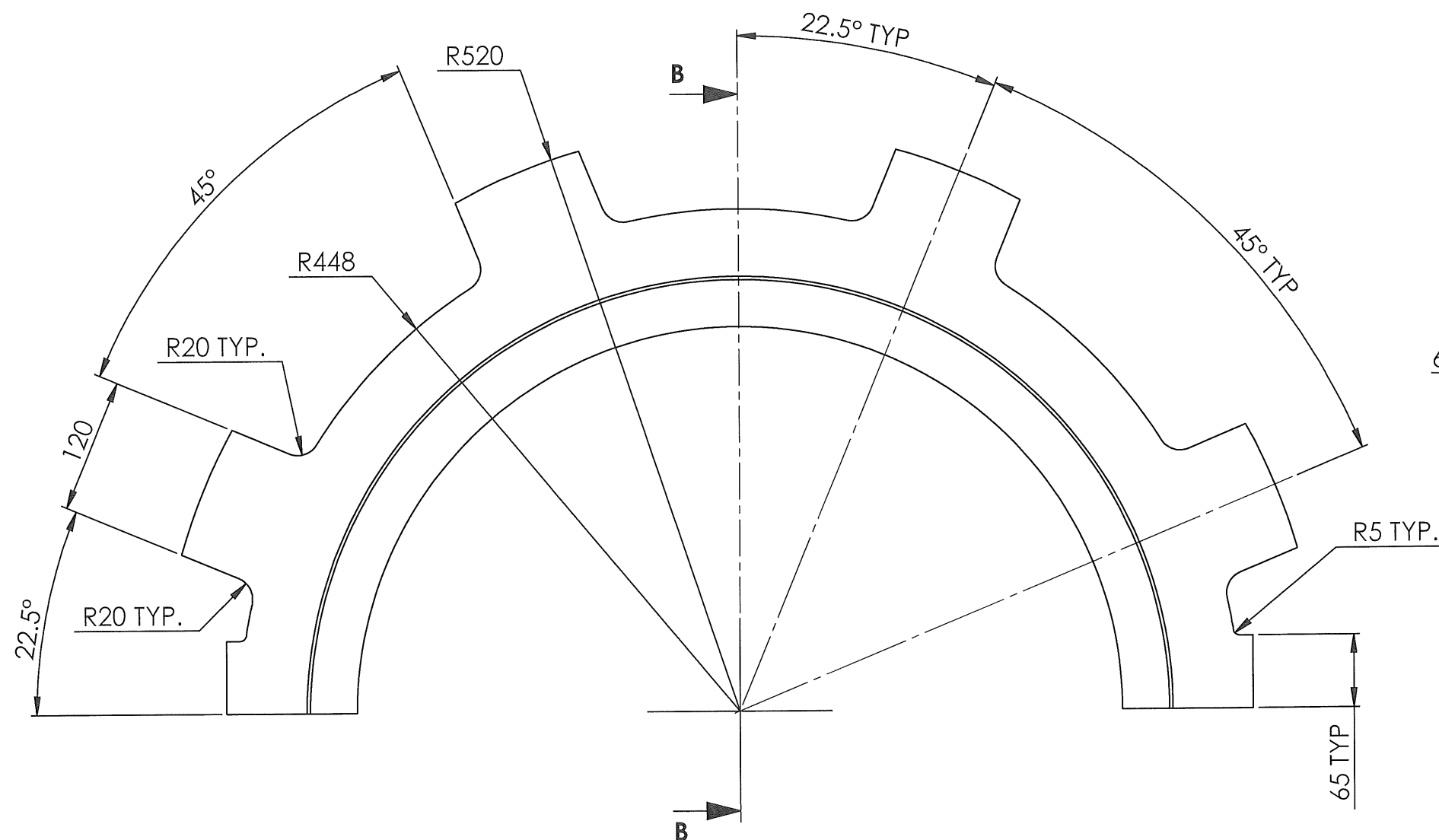
SIZE A3L

DRAWING COPYRIGHT STATEMENT

Copyright subsists in this drawing and vests in Eskom Rotek Industries SOC Ltd. The drawing and its notations, unless otherwise indicated, also constitute confidential information which is the property of Eskom Rotek Industries SOC Ltd. Eskom Rotek Industries SOC Ltd. relies, for the protection of its interests, on the statutory and common law rights as aforesaid and any unauthorised copying or use of this drawing or its contents would result in infringement of such rights.



IF IN DOUBT ASK



ISOMETRIC VIEW

6 X 45°

SECTION B-B

Notes

1. Remove all burrs and sharp edges
2. Tolerances $\pm 0.2\text{mm}$ U.O.S
3. Angular tolerances $\pm 0.2^\circ$ U.O.S
4. All dimensions are in mm
5. Machined $\nabla^{1.6}$ U.O.S.
6. Dimensions in (...) are for reference only.

Finish: Clean

Used on: 13.25_8647

Material: S355JR or equivalent

Mass: 52.8 kg

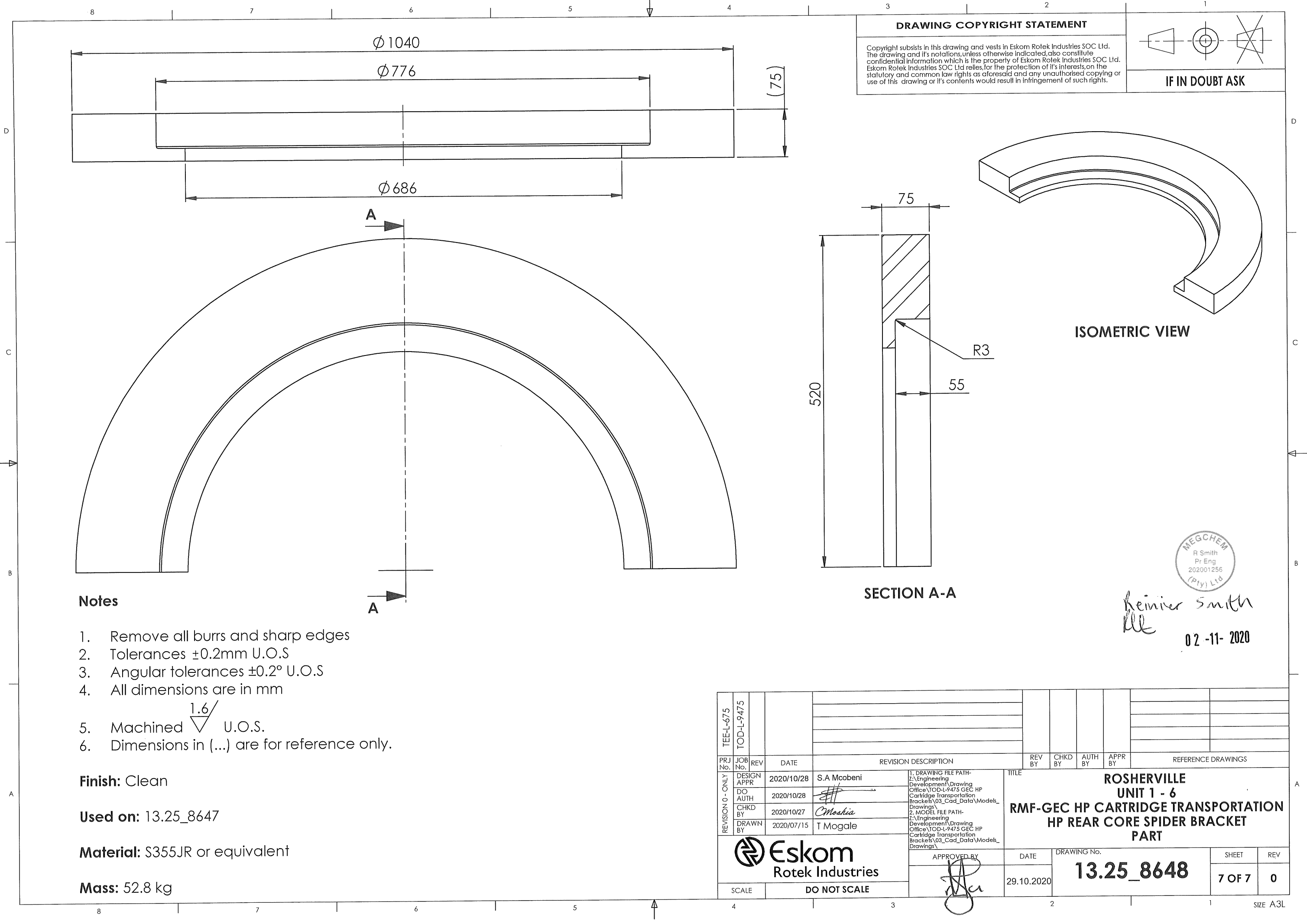


Reimer Smith
02-11-2020

PRJ No.	JOB No.	REV	DATE	REVISION DESCRIPTION	REV BY	CHKD BY	AUTH BY	APPR BY	REFERENCE DRAWINGS
TEE-L-675	TOD-L-9475								
DESIGN APPR	2020/10/28	S.A Mcoben		1. DRAWING FILE PATH- Z:\Engineering Development\Drawing Office\TOD-L-9475 GEC HP Cartridge Transportation Brackets\03_Cad_Data\Models_Drawings\					
DO AUTH	2020/10/28			2. MODEL FILE PATH- Z:\Engineering Development\Drawing Office\TOD-L-9475 GEC HP Cartridge Transportation Brackets\03_Cad_Data\Models_Drawings\					
CHKD BY	2020/10/27	Moshia							
DRAWN BY	2020/07/15	T Mogale							
APPROVED BY					DATE	DRAWING No.	SHEET	REV	
Eskom Rotek Industries					29.10.2020	13.25_8648	6 OF 7	0	
SCALE					DO NOT SCALE				

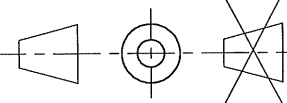
ROSHERVILLE
UNIT 1 - 6
RMF-GEC HP CARTRIDGE TRANSPORTATION
HP REAR CORE SPIDER BRACKET
PART

SIZE A3L



DRAWING COPYRIGHT STATEMENT

Copyright subsists in this drawing and vests in Eskom Rotek Industries SOC Ltd. The drawing and its notations, unless otherwise indicated, also constitute confidential information which is the property of Eskom Rotek Industries SOC Ltd. Eskom Rotek Industries SOC Ltd. relies, for the protection of its interests, on the statutory and common law rights as aforesaid and any unauthorised copying or use of this drawing or its contents would result in infringement of such rights.



IF IN DOUBT ASK

ISOMETRIC VIEW

SECTION A-A



Reinier Smith
02-11-2020

Notes

1. Remove all burrs and sharp edges
2. Tolerances $\pm 0.2\text{mm}$ U.O.S
3. Angular tolerances $\pm 0.2^\circ$ U.O.S
4. All dimensions are in mm
5. Machined $\nabla 1.6$ U.O.S.
6. Dimensions in (...) are for reference only.

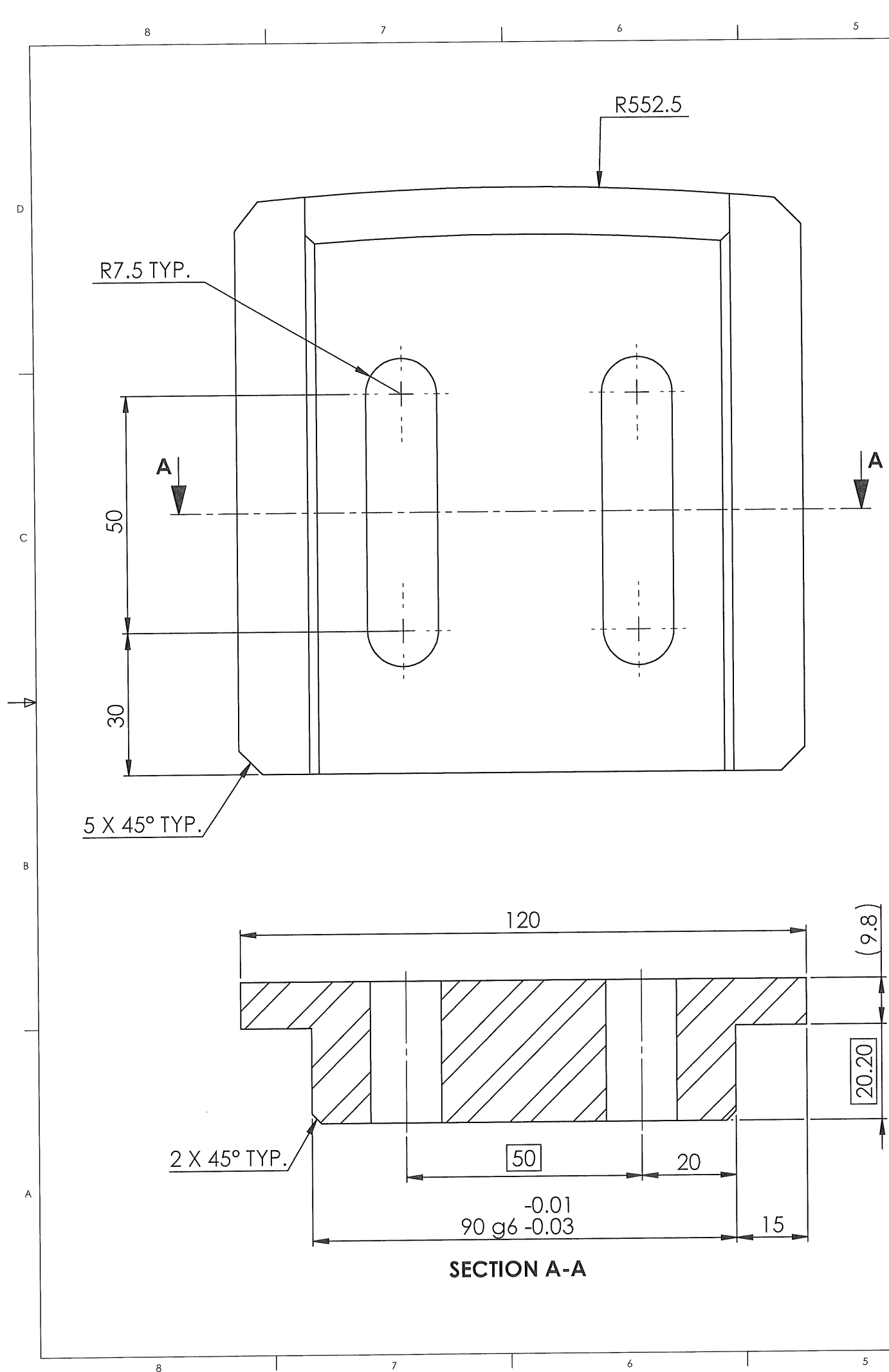
Finish: Clean

Used on: 13.25_8647

Material: S355JR or equivalent

Mass: 52.8 kg

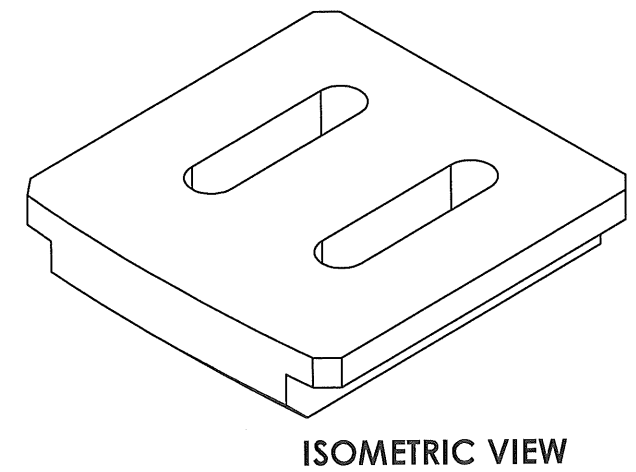
PRJ No.	JOB No.	REV	DATE	REVISION DESCRIPTION	REV BY	CHKD BY	AUTH BY	APPR BY	REFERENCE DRAWINGS
TEE-L-675	TOD-L-9475								
DESIGN APPR	2020/10/28	S.A Mcoben		1. DRAWING FILE PATH: Z:\Engineering Development\Drawing Office\TOD-L-9475 GEC HP Cartridge Transportation Brackets\03_Cad_Data\Models_Drawings\					
DO AUTH	2020/10/28			2. MODEL FILE PATH: Z:\Engineering Development\Drawing Office\TOD-L-9475 GEC HP Cartridge Transportation Brackets\03_Cad_Data\Models_Drawings\					
CHKD BY	2020/10/27	Moshia							
DRAWN BY	2020/07/15	T Mogale							
Eskom Rotek Industries					APPROVED BY	DATE	DRAWING No.	SHEET	REV
DO NOT SCALE						29.10.2020	13.25_8648	7 OF 7	0



DRAWING COPYRIGHT STATEMENT

Copyright subsists in this drawing and vests in Eskom Rotek Industries SOC Ltd. The drawing and its notations, unless otherwise indicated, also constitute confidential information which is the property of Eskom Rotek Industries SOC Ltd. Eskom Rotek Industries SOC Ltd. relies, for the protection of its interests, on the statutory and common law rights as aforesaid and any unauthorised copying or use of this drawing or its contents would result in infringement of such rights.

IF IN DOUBT ASK



Notes

1. Remove all burrs and sharp edges.
2. Tolerances $\pm 0.2\text{mm}$ U.O.S.
3. Angular tolerances $\pm 0.5^\circ$ U.O.S.
4. All dimensions are in mm.
5. Machined $\nabla_{1.6}$ U.O.S.
6. Dimensions in (...) are for reference only.

Finish: Clean

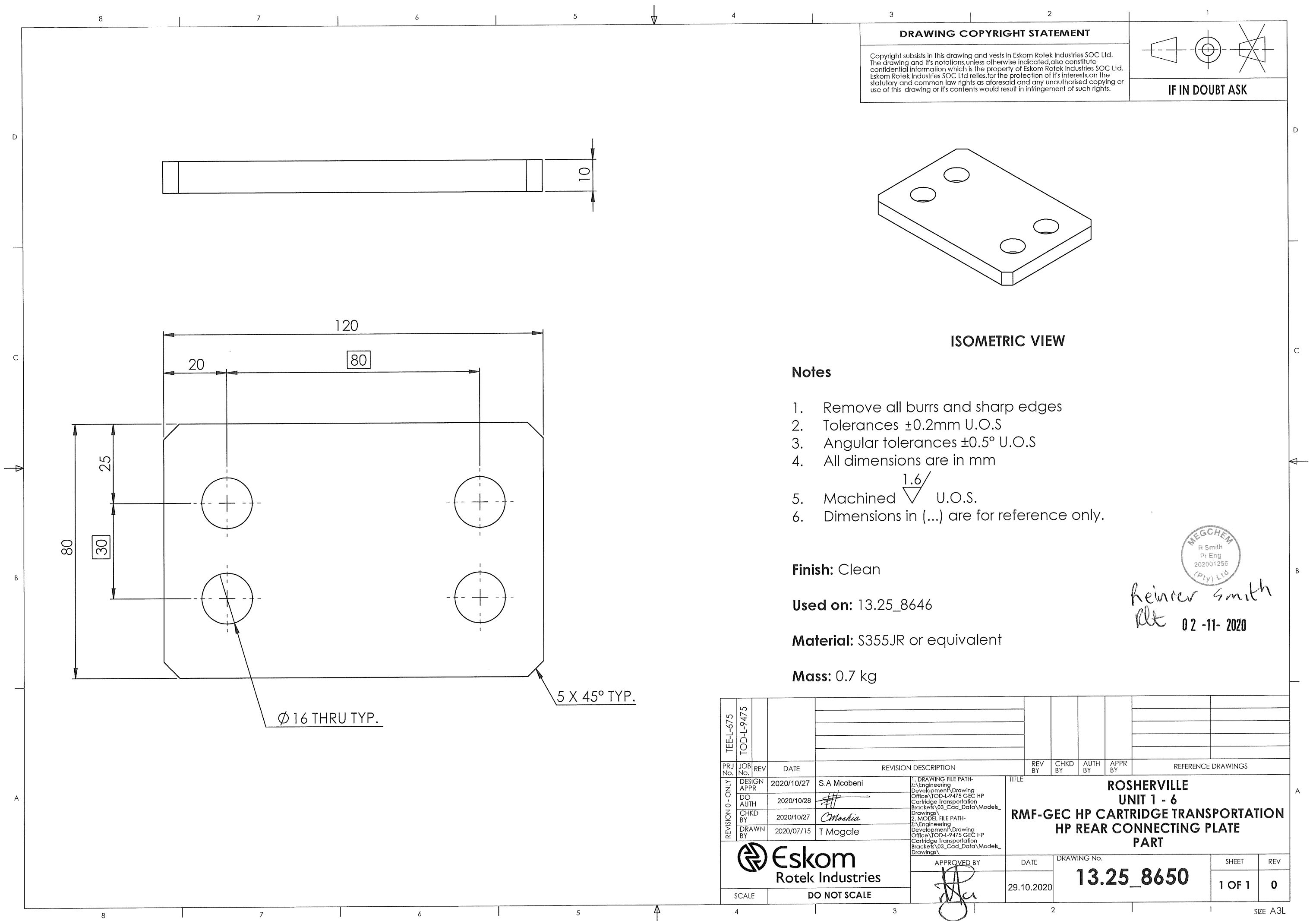
Used on: 13.25_8647

Material: S355JR or equivalent

Mass: 2.4 kg

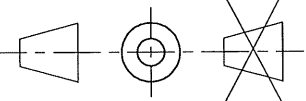


PRJ No.	JOB No.	REV	DATE	REVISION DESCRIPTION	REV BY	CHKD BY	AUTH BY	APPR BY	REFERENCE DRAWINGS
TEE-L-675	TOD-L-9475								
DESIGN APPR	2020/07/29	S.A Mcobeni		1. DRAWING FILE PATH- Z:\Engineering Development\Drawing Office\TOD-L-9475 GEC HP Cartridge Transportation Brackets\03_Cad_Data\Models Drawings\					
DO AUTH	2020/07/28			2. MODEL FILE PATH- Z:\Engineering Development\Drawing Office\TOD-L-9475 GEC HP Cartridge Transportation Brackets\03_Cad_Data\Models Drawings\					
CHKD BY	2020/07/28	Moshia							
DRAWN BY	2020/07/15	T Mogale							
					ROSHERVILLE UNIT 1 - 6 RMF-GEC HP CARTRIDGE TRANSPORTATION HP REAR ADJUSTABLE LEG PART				
					APPROVED BY	DATE	DRAWING No.	SHEET	REV
						21.08.2020	13.25_8649	1 OF 1	0
SCALE					DO NOT SCALE				
					SIZE A3L				

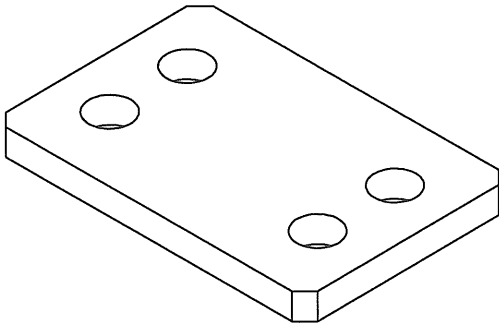


DRAWING COPYRIGHT STATEMENT

Copyright subsists in this drawing and vests in Eskom Rotek Industries SOC Ltd. The drawing and its notations, unless otherwise indicated, also constitute confidential information which is the property of Eskom Rotek Industries SOC Ltd. Eskom Rotek Industries SOC Ltd. relies, for the protection of its interests, on the statutory and common law rights as aforesaid and any unauthorised copying or use of this drawing or its contents would result in infringement of such rights.



IF IN DOUBT ASK



ISOMETRIC VIEW

Notes

- 1. Remove all burrs and sharp edges
- 2. Tolerances $\pm 0.2\text{mm}$ U.O.S
- 3. Angular tolerances $\pm 0.5^\circ$ U.O.S
- 4. All dimensions are in mm
- 5. Machined $\nabla_{1.6}$ U.O.S.
- 6. Dimensions in (...) are for reference only.

Finish: Clean

Used on: 13.25_8646

Material: S355JR or equivalent

Mass: 0.7 kg



Reinier Smith
Rlt 02-11-2020

TEEL-675	TOD-L-9475																																																																																																																																																																																																																																																																																																																																																																																																																																																																																																																																																																																																																																																																																																																																																																																																																																																																																																																																																																																																																																																																																																																																																																																																																																																																																																																																																																																																																											
----------	------------	--	--	--	--	--	--	--	--	--	--	--	--	--	--	--	--	--	--	--	--	--	--	--	--	--	--	--	--	--	--	--	--	--	--	--	--	--	--	--	--	--	--	--	--	--	--	--	--	--	--	--	--	--	--	--	--	--	--	--	--	--	--	--	--	--	--	--	--	--	--	--	--	--	--	--	--	--	--	--	--	--	--	--	--	--	--	--	--	--	--	--	--	--	--	--	--	--	--	--	--	--	--	--	--	--	--	--	--	--	--	--	--	--	--	--	--	--	--	--	--	--	--	--	--	--	--	--	--	--	--	--	--	--	--	--	--	--	--	--	--	--	--	--	--	--	--	--	--	--	--	--	--	--	--	--	--	--	--	--	--	--	--	--	--	--	--	--	--	--	--	--	--	--	--	--	--	--	--	--	--	--	--	--	--	--	--	--	--	--	--	--	--	--	--	--	--	--	--	--	--	--	--	--	--	--	--	--	--	--	--	--	--	--	--	--	--	--	--	--	--	--	--	--	--	--	--	--	--	--	--	--	--	--	--	--	--	--	--	--	--	--	--	--	--	--	--	--	--	--	--	--	--	--	--	--	--	--	--	--	--	--	--	--	--	--	--	--	--	--	--	--	--	--	--	--	--	--	--	--	--	--	--	--	--	--	--	--	--	--	--	--	--	--	--	--	--	--	--	--	--	--	--	--	--	--	--	--	--	--	--	--	--	--	--	--	--	--	--	--	--	--	--	--	--	--	--	--	--	--	--	--	--	--	--	--	--	--	--	--	--	--	--	--	--	--	--	--	--	--	--	--	--	--	--	--	--	--	--	--	--	--	--	--	--	--	--	--	--	--	--	--	--	--	--	--	--	--	--	--	--	--	--	--	--	--	--	--	--	--	--	--	--	--	--	--	--	--	--	--	--	--	--	--	--	--	--	--	--	--	--	--	--	--	--	--	--	--	--	--	--	--	--	--	--	--	--	--	--	--	--	--	--	--	--	--	--	--	--	--	--	--	--	--	--	--	--	--	--	--	--	--	--	--	--	--	--	--	--	--	--	--	--	--	--	--	--	--	--	--	--	--	--	--	--	--	--	--	--	--	--	--	--	--	--	--	--	--	--	--	--	--	--	--	--	--	--	--	--	--	--	--	--	--	--	--	--	--	--	--	--	--	--	--	--	--	--	--	--	--	--	--	--	--	--	--	--	--	--	--	--	--	--	--	--	--	--	--	--	--	--	--	--	--	--	--	--	--	--	--	--	--	--	--	--	--	--	--	--	--	--	--	--	--	--	--	--	--	--	--	--	--	--	--	--	--	--	--	--	--	--	--	--	--	--	--	--	--	--	--	--	--	--	--	--	--	--	--	--	--	--	--	--	--	--	--	--	--	--	--	--	--	--	--	--	--	--	--	--	--	--	--	--	--	--	--	--	--	--	--	--	--	--	--	--	--	--	--	--	--	--	--	--	--	--	--	--	--	--	--	--	--	--	--	--	--	--	--	--	--	--	--	--	--	--	--	--	--	--	--	--	--	--	--	--	--	--	--	--	--	--	--	--	--	--	--	--	--	--	--	--	--	--	--	--	--	--	--	--	--	--	--	--	--	--	--	--	--	--	--	--	--	--	--	--	--	--	--	--	--	--	--	--	--	--	--	--	--	--	--	--	--	--	--	--	--	--	--	--	--	--	--	--	--	--	--	--	--	--	--	--	--	--	--	--	--	--	--	--	--	--	--	--	--	--	--	--	--	--	--	--	--	--	--	--	--	--	--	--	--	--	--	--	--	--	--	--	--	--	--	--	--	--	--	--	--	--	--	--	--	--	--	--	--	--	--	--	--	--	--	--	--	--	--	--	--	--	--	--	--	--	--	--	--	--	--	--	--	--	--	--	--	--	--	--	--	--	--	--	--	--	--	--	--	--	--	--	--	--	--	--	--	--	--	--	--	--	--	--	--	--	--	--	--	--	--	--	--	--	--	--	--	--	--	--	--	--	--	--	--	--	--	--	--	--	--	--	--	--	--	--	--	--	--	--	--	--	--	--	--	--	--	--	--	--	--	--	--	--	--	--	--	--	--	--	--	--	--	--	--	--	--	--	--	--	--	--	--	--	--	--	--	--	--	--	--	--	--	--	--	--	--	--	--	--	--	--	--	--	--	--	--	--	--	--	--	--	--	--	--	--	--	--	--	--	--	--	--	--	--	--	--	--	--	--	--	--	--	--	--	--	--	--	--	--	--	--	--	--	--	--	--	--	--	--	--	--	--	--	--	--	--	--	--	--	--	--	--	--	--	--	--	--	--	--	--	--	--	--	--	--	--	--	--	--	--	--	--	--	--	--	--	--	--	--	--	--	--	--	--	--	--	--	--	--	--	--	--	--	--	--	--	--	--	--	--	--	--	--	--	--	--	--	--	--	--	--	--	--	--	--	--	--	--	--	--	--	--	--	--	--	--	--	--	--	--	--	--	--	--	--	--	--	--	--	--	--	--	--	--	--	--	--	--	--	--	--	--	--	--	--	--	--	--	--	--	--	--	--	--	--	--	--	--	--	--	--	--	--	--	--	--	--	--	--	--	--	--	--	--	--	--	--	--	--	--	--	--	--	--	--	--	--	--	--	--	--	--	--	--	--	--	--	--	--	--	--	--	--	--	--	--	--	--	--	--	--	--	--	--	--	--	--	--	--	--	--	--	--	--	--	--	--	--	--	--	--	--	--	--	--	--	--	--	--	--	--	--	--	--	--	--	--	--	--	--	--	--	--	--	--	--	--	--	--	--	--	--	--	--	--	--	--	--	--	--	--	--	--	--	--	--	--	--	--	--	--	--	--	--	--	--	--	--	--	--	--	--	--	--	--	--	--	--	--	--	--	--	--	--	--	--	--	--	--	--	--	--	--	--	--	--	--	--	--	--	--	--	--	--	--	--	--	--	--	--	--	--	--	--	--	--	--	--	--	--	--	--	--	--	--	--	--	--	--	--	--	--	--	--	--	--	--	--	--	--	--	--	--	--	--	--	--	--	--	--	--	--	--	--	--	--	--	--	--	--	--	--	--	--	--	--	--	--	--	--	--	--	--	--	--	--	--	--	--	--	--	--	--	--	--	--